



ASKING PRICE

£190,000

Main Road

Westerham, TN16 3BB

PROPERTY SUMMARY

A generously proportioned One Bedroom first floor purpose built retirement flat, situated in this convenient location close to the multiple shopping facilities Biggin Hill has to offer, including Waitrose, coffee shops and restaurants. For those wishing to venture further afield there are frequent buses to both Bromley & Westerham. The property also benefits from an estate manager, secure entry system, communal gardens and parking. EPC: C

Leasehold - 90 years approx
Service Charge - £2847 p/a
Ground Rent - £0
COUNCIL TAX - C
Construction - Traditional
Mains Services - Yes
Heating System - Electric storage heating
Broadband - BT in block
Mobile coverage - Yes
Restrictive covenants - No

1



1



1

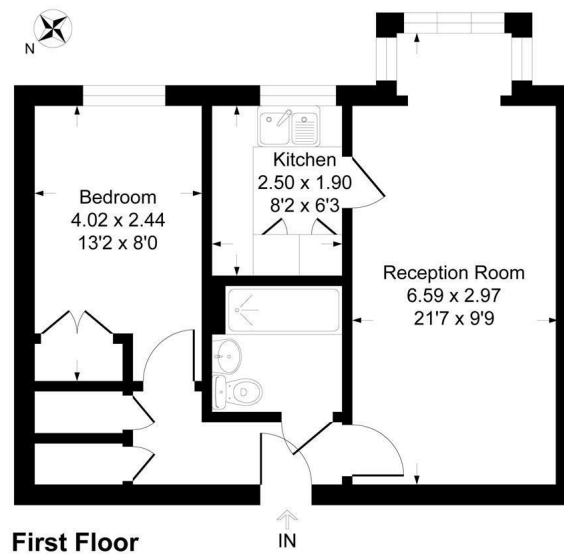




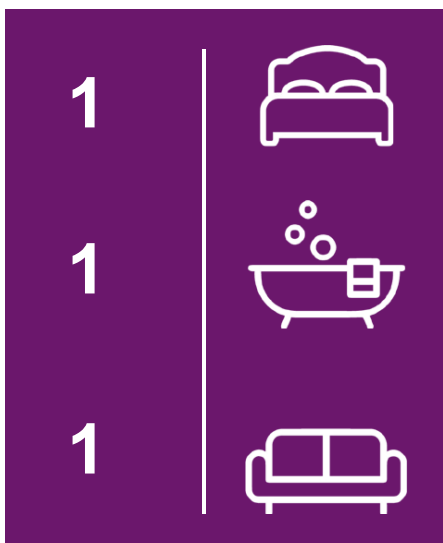


Tudor Court, Main Road, TN16

Approximate Gross Internal Area 43.8 sq m / 472 sq ft



This plan is for layout guidance only. Not drawn to scale unless stated. Windows and door openings are approximate. Whilst every care is taken in the preparation of this plan, please check all dimensions, shapes and compass bearings before making any decisions reliant upon them.
Produced By Plampix



Energy Efficiency Rating		
	Current	Potential
Very energy efficient - lower running costs		
(92 plus) A		
(81-91) B		
(69-80) C	76	81
(55-68) D		
(39-54) E		
(21-38) F		
(1-20) G		
Not energy efficient - higher running costs		
England & Wales		
	EU Directive 2002/91/EC	

EPC RATING: C COUNCIL TAX BAND: C

Agents Note: Whilst every care has been taken to prepare these particulars, they are for guidance purposes only. All measurements are approximate and are for general guidance purposes only and whilst every care has been taken to ensure their accuracy, they should not be relied upon and potential buyers/tenants are advised to recheck the measurements

Sinclair Hammelton

OFFICE ADDRESS
1&2 The Grange
Westerham
Kent
TN16 7AH

OFFICE DETAILS
01959 587 460
infowh@sinclairhammelton